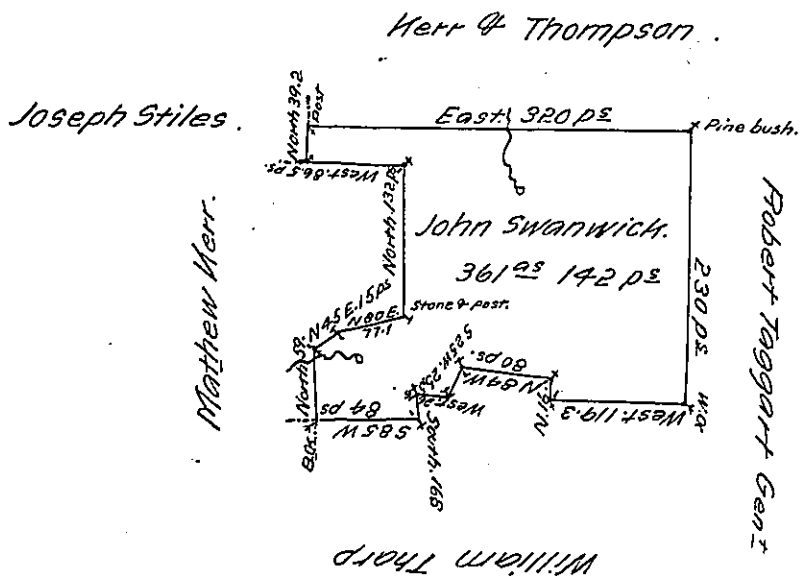


Courses & Distances of John Swanwick  
whole tract of Land Beginning, a-  
white oak the South East Corner  
thence West.

- West 119.3<sup>ps</sup> to a hickory.
- North 16. to a Post.
- N 84 W. 80. to a post
- S 25 W. 25.5 to a Chesnut
- West 26.6 to a post
- South. 16.8 to a B.O.
- S 85 W 84. to a B.O.
- North 59. to a post
- N 45 E. 15. to a stone
- N 80 E 77.1 to a stone & post
- North 132.0 to a post.
- West 86.5 to a W.O.
- North 39.2 to a post
- East 320.0 to a pine bush.
- South 230.0 to the Beginning.



In pursuance of a Warrant for 400 acres of Land

Granted to John Swanwick dated 14th of April 1792 was surveyed 16th  
day of december 1829 the above described tract of Land Containing three  
Hundred sixty one acres one hundred forty two perches and allowance  
of six pr Cent for Roads &c. Situate in oil Creek Township Crawford  
County Pennsylvania

James Herrington D.P. Sr.

To Gabl Hiester Esq. S.G.  
Land Office. Pennsylvania.

IN TESTIMONY that the above is a copy of the original remaining on file in  
the Department of Internal Affairs of Pennsylvania, made  
conformably to an Act of Assembly approved the 16th day of  
February, 1833, I have hereunto set my Hand and caused  
the Seal of said Department to be affixed at Harrisburg,  
this Third day of January 1907

*Loac P. Brown*  
Secretary of Internal Affairs.